

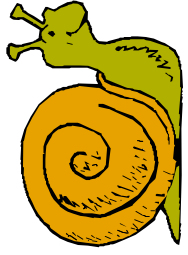
sm



st



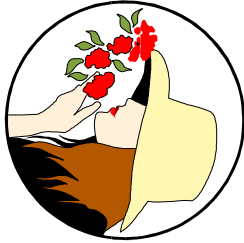
scr



str

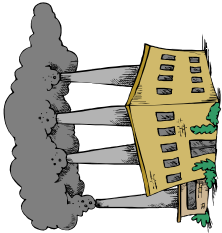


scr



ns

sn



sm

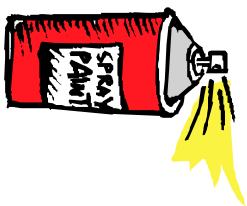




sm



ts

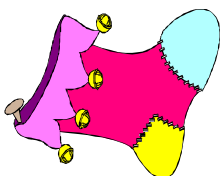


str

spr



sn

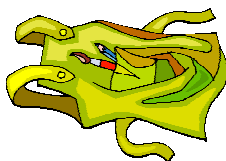


spr

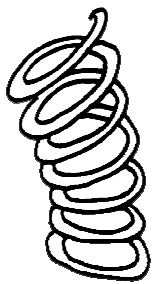
sm



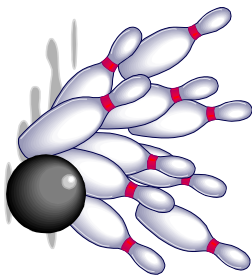
scr



str



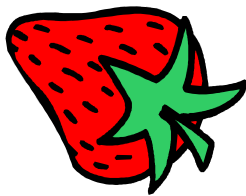
uds



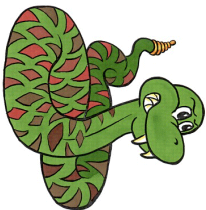
scr



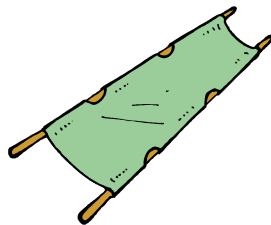
us



ts



spr



str



st



Blends Dominoes

Set 1: spr, sn, sm, str, scr, st

Print the domino set on vellum or card stock and laminate for durability. Place a matching sticker on the back of each card to distinguish this set from others. The object of the game is to match blends on one domino half to that of the half already played on the table. To play, each of two to four players picks a specified number of face-down dominoes. The first player to dispose of all of his or her dominoes wins.