

# The kite Family Set



Written by Cherry Carl  
Illustrated by Ron Leishman  
Images©Toonaday.com/Toonclipart.com



## -ite Word Family List

bite

sprite

polite

cite

trite

recite

kite\*

white

termite

quite

write

unite

rite

excite

appetite

site

ignite

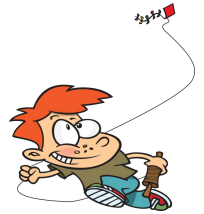
dynamite

spite

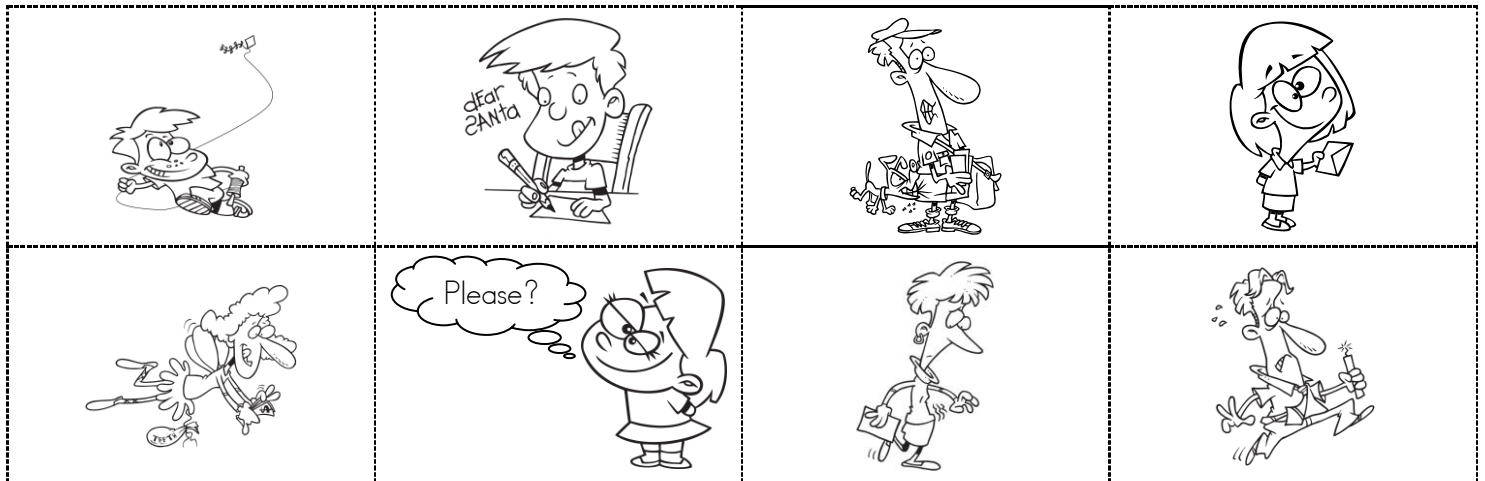
invite

satellite

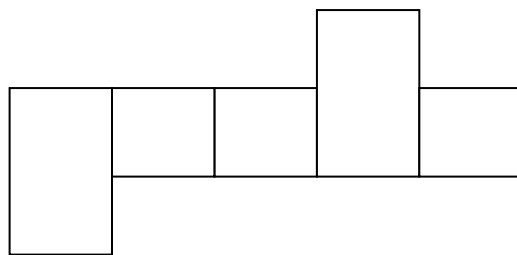
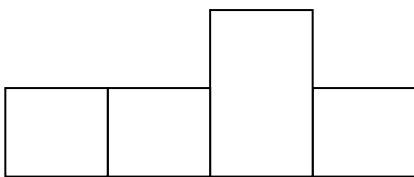
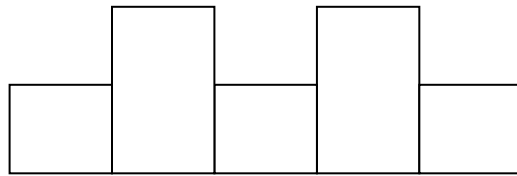
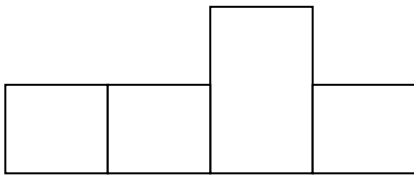
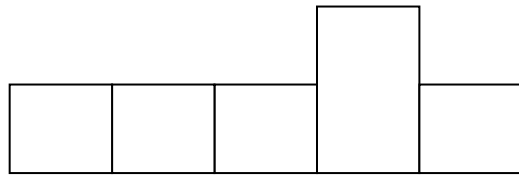
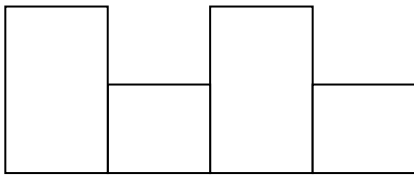
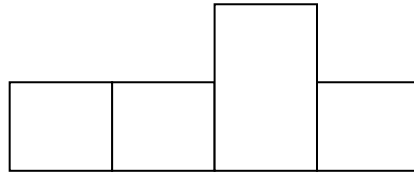
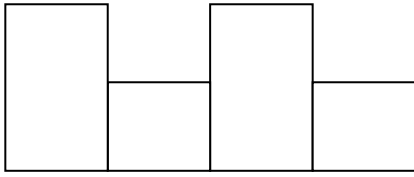
# Cut and Paste: ite



invite		sprite	
appetite		kite	
bite		polite	
dynamite		write	

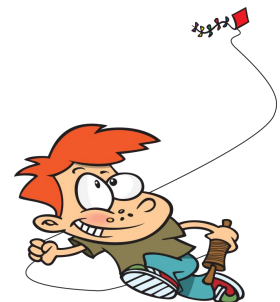


# Configuration Station (ite)



## Word Bank

bite      white      rite      quite  
write      site      kite      cite



# ite See, Say, Spell and Write



Handwriting practice lines consisting of a solid top line, a dashed middle line, and a solid bottom line.



Handwriting practice lines consisting of a solid top line, a dashed middle line, and a solid bottom line.



Handwriting practice lines consisting of a solid top line, a dashed middle line, and a solid bottom line.



Handwriting practice lines consisting of a solid top line, a dashed middle line, and a solid bottom line.

excite

polite

# Circle and Write



Look at the picture in each box. Circle the word that matches the picture.  
Write the word on the lines.

1.



spit  
sprite

---

---

---

2.



bait  
bite

---

---

---

3.



invite  
invade

---

---

---

4.



write  
write

---

---

---

5.



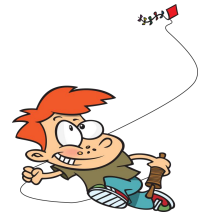
kit  
kite

---

---

---

# Finish and Write



Say the name of each picture. If the picture belongs in the -ite family and rhymes with *kite*, add -ite to finish writing the word.



kn



b



rec



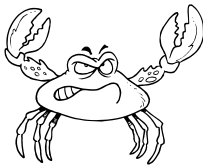
inv



f



wr



cr

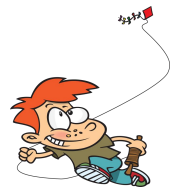


spr



k

# ite Word Search



i	n	v	i	t	e	y	r	a	z
g	f	j	u	v	x	h	i	d	r
n	z	w	m	b	c	i	t	e	e
i	y	a	l	x	i	f	e	u	c
t	d	v	s	i	t	e	z	k	i
e	u	h	p	y	e	a	o	i	t
a	f	z	r	j	q	u	i	t	e
p	o	l	i	t	e	z	u	e	a
y	j	v	t	r	i	t	e	m	y
b	i	t	e	a	f	h	d	z	u

bite

sprite

polite

kite

trite

recite

invite

rite

ignite

site

cite

quite

excite





# Cloze the Gap! (ite)

Read the following sentences, saying the word "kite" when you come to a blank space. Use words from the *-ite* family to fill in the blanks and make sense. Reread your sentences to double check your choices!

1. My brother helped me fly my new \_\_\_\_\_.
2. Mom says to be \_\_\_\_\_ and say please.
3. We all have to \_\_\_\_\_ a poem at school.
4. A fairy or an elf can also called a \_\_\_\_\_.
5. Take a big \_\_\_\_\_ of your double cheeseburger if you can!
6. I didn't have \_\_\_\_\_ enough glue for my project.
7. Does toothpaste make your teeth \_\_\_\_\_?
8. Don't scratch your mosquito \_\_\_\_\_ !
9. What is your favorite \_\_\_\_\_ for games?
10. Don't forget to \_\_\_\_\_ your name on your paper.
11. Use a match to \_\_\_\_\_ the barbecue or campfire.

## Word Bank

recite	bite	invite	sprite	quite
kite	website	polite	write	bite
		ignite		



# Alphabet Avenue

Place the words below in alphabetical order.

1		7	
2		8	
3		9	
4		10	
5		11	
6		12	

**WORD BANK**

white	kite	quite	invite	write	cite
bite	sprite	site	rite	recite	excite

# Score With Scrabble

SCORE

B <sub>3</sub>	I <sub>1</sub>	T <sub>1</sub>	E <sub>1</sub>		
K <sub>5</sub>	I <sub>1</sub>	T <sub>1</sub>	E <sub>1</sub>		
W <sub>4</sub>	R <sub>1</sub>	I <sub>1</sub>	T <sub>1</sub>	E <sub>1</sub>	
W <sub>4</sub>	H <sub>4</sub>	I <sub>1</sub>	T <sub>1</sub>	E <sub>1</sub>	
R <sub>1</sub>	E <sub>1</sub>	C <sub>3</sub>	I <sub>1</sub>	T <sub>1</sub>	E <sub>1</sub>
E <sub>1</sub>	X <sub>8</sub>	C <sub>3</sub>	I <sub>1</sub>	T <sub>1</sub>	E <sub>1</sub>
I <sub>1</sub>	N <sub>1</sub>	V <sub>4</sub>	I <sub>1</sub>	T <sub>1</sub>	E <sub>1</sub>
P <sub>3</sub>	O <sub>1</sub>	L <sub>1</sub>	I <sub>1</sub>	T <sub>1</sub>	E <sub>1</sub>
U <sub>1</sub>	N <sub>1</sub>	I <sub>1</sub>	T <sub>1</sub>	E <sub>1</sub>	
I <sub>1</sub>	G <sub>2</sub>	N <sub>1</sub>	I <sub>1</sub>	T <sub>1</sub>	E <sub>1</sub>
Q <sub>10</sub>	U <sub>1</sub>	I <sub>1</sub>	T <sub>1</sub>	E <sub>1</sub>	

# ite Family Word Slide

\_\_\_\_\_  
\_\_\_\_\_  
ite



ite Family Word Slide  
(Sound Blending)

Print on vellum, cut, and laminate for durability. Cut the top and bottom slits to the left of the rime chunk for the slide. Model proper use for students: blending to form and say new words.

b

c

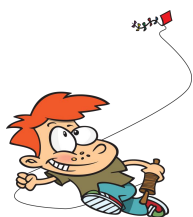
k

r

s

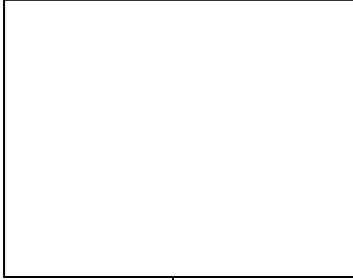
wh

wr



ite Partner Puzzles

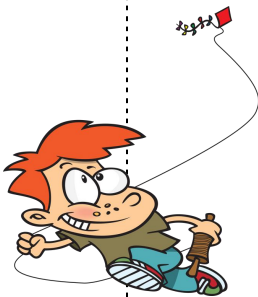
white



write



kite



bite



invite



recite



kite



kite



write



bite



bite



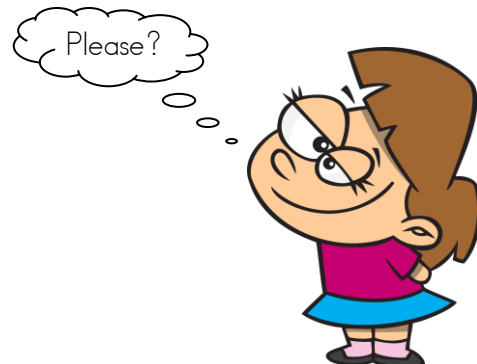
invite



recite



polite





dynamite



-ite Pictures and Words



-ite Pictures and Words

kite

-ite Pictures and Words



-ite Pictures and Words

kite

-ite Pictures and Words



-ite Pictures and Words

bite

-ite Pictures and Words



-ite Pictures and Words

write

-ite Pictures and Words



-ite Pictures and Words

bite

-ite Pictures and Words



-ite Pictures and Words

invite

-ite Pictures and Words



-ite Pictures and Words

appetite

-ite Pictures and Words



-ite Pictures and Words

appetite

-ite Pictures and Words



-ite Pictures and Words

dynamite

-ite Pictures and Words

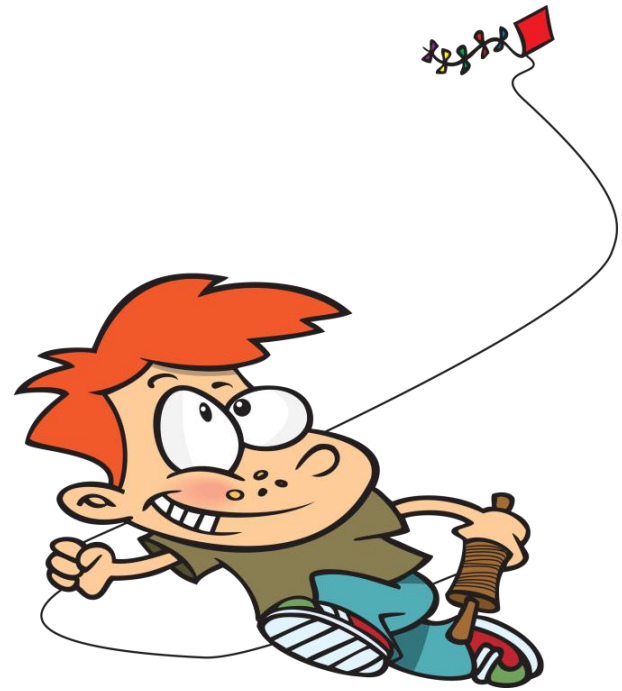


-ite Pictures and Words

polite



My ite Book



My ite Book

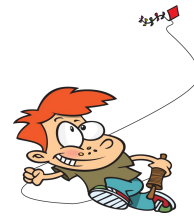
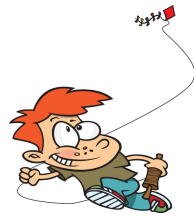
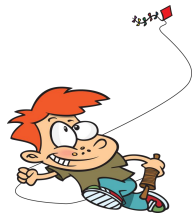


# Word Family Stationary

bite, cite, kite, quite, rite, site, spite, sprite, trite,  
white, white, excite, ignite, invite, polite, recite

Write sentences or a story with -ite words of your choice.

Handwriting practice lines consisting of solid top and bottom lines with a dashed middle line. There are five sets of these lines provided for writing.



\_\_\_\_\_ite

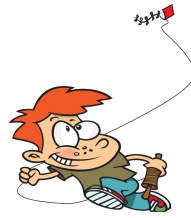
\_\_\_\_\_ite

\_\_\_\_\_ite

\_\_\_\_\_ite

\_\_\_\_\_ite

\_\_\_\_\_ite



-ite family

\_\_\_ite \_\_\_ite

\_\_\_ite \_\_\_ite

\_\_\_ite \_\_\_ite

\_\_\_ite \_\_\_ite



-ite family

\_\_\_ite \_\_\_ite

\_\_\_ite \_\_\_ite

\_\_\_ite \_\_\_ite

\_\_\_ite \_\_\_ite